

**Le Verre en Sculpture:
du minimal au monumental**

« *Strates* »

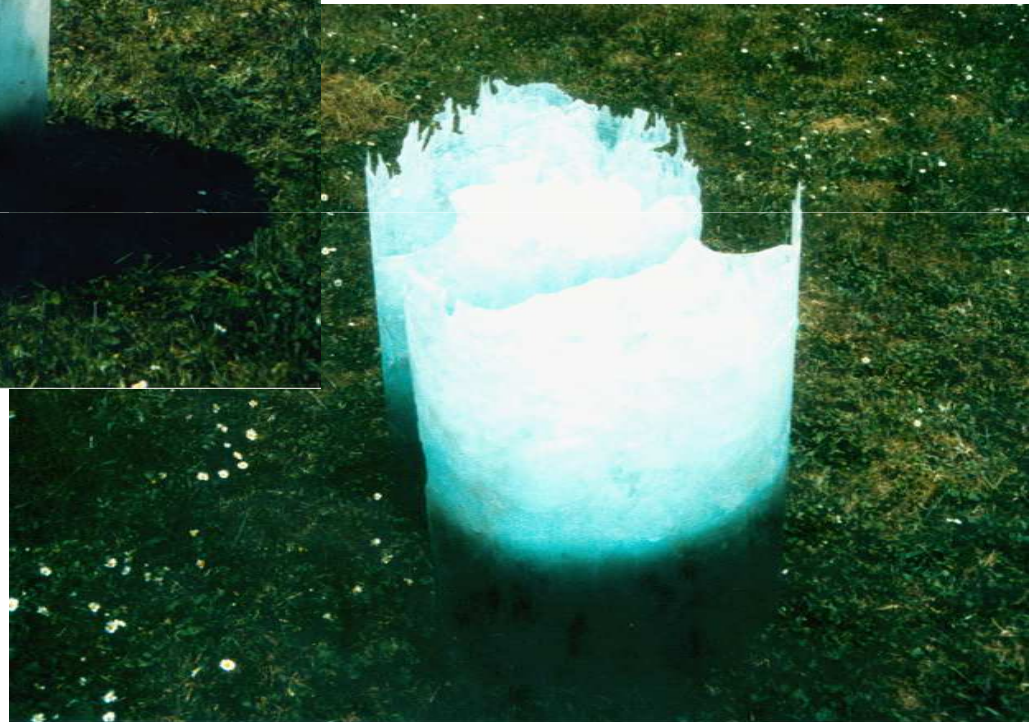
Débuts au Fusing
ESADS-1995



Thomasine Giesecke



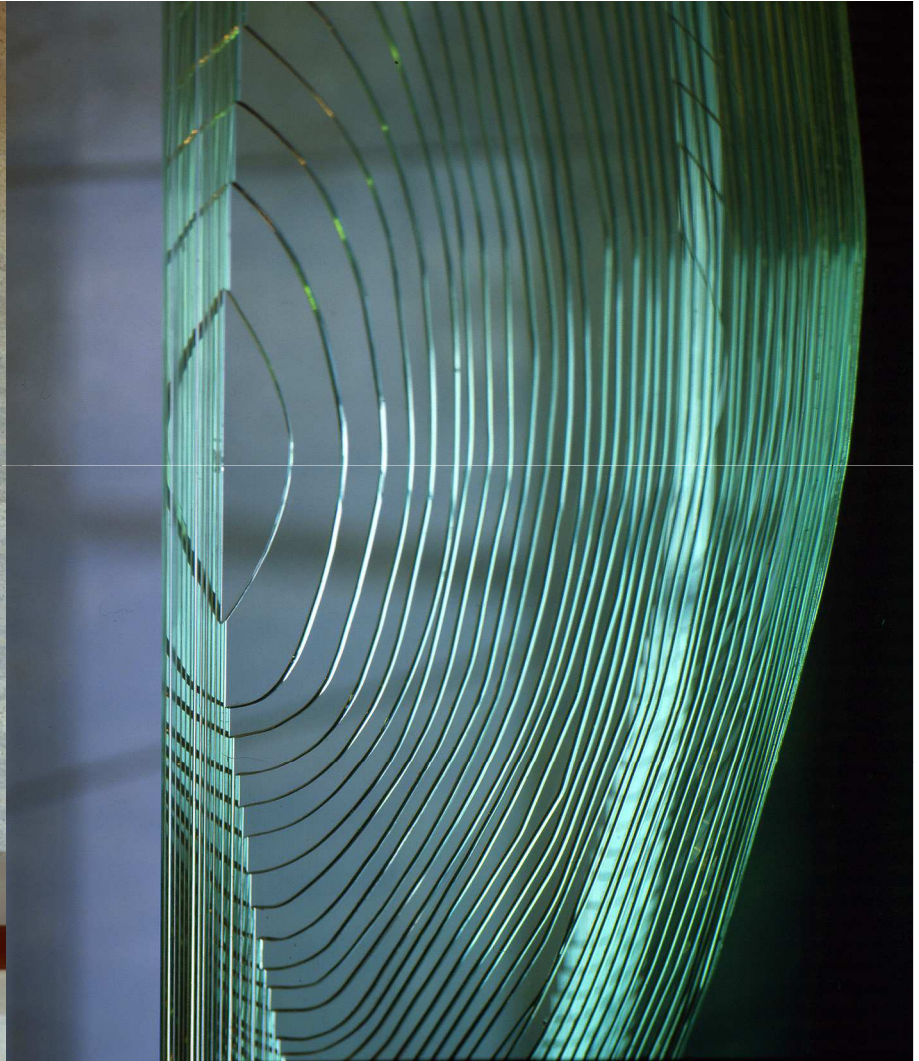
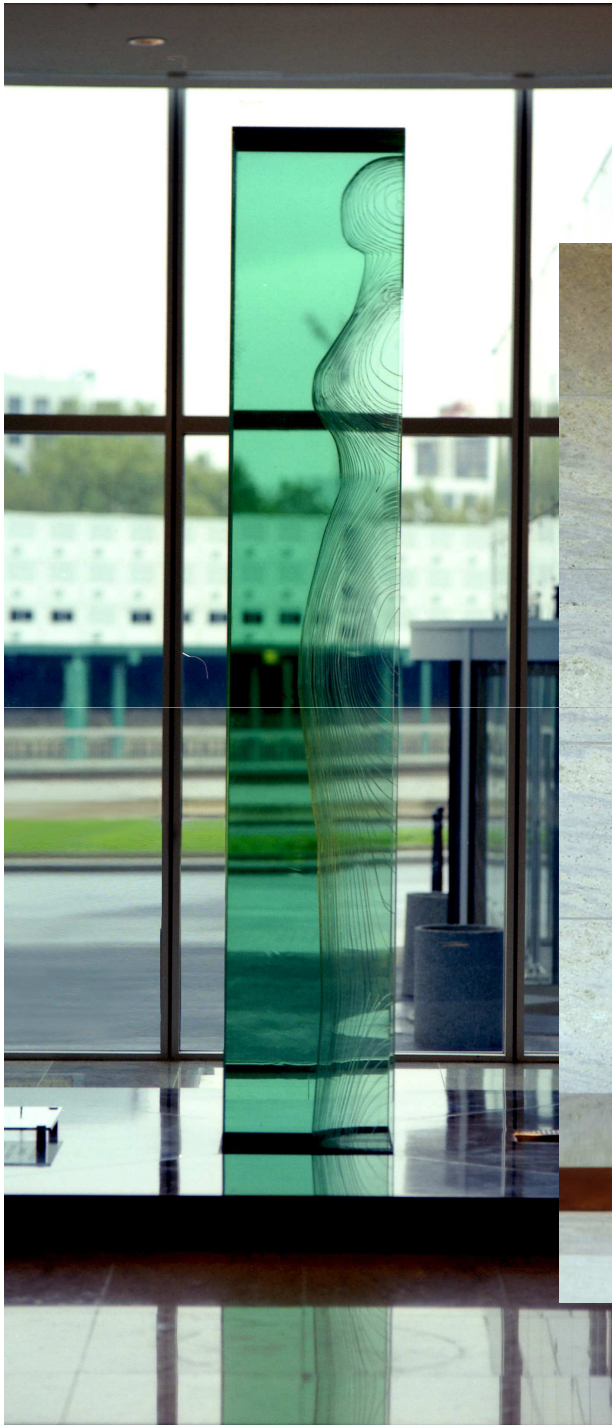
« *Aqua* »
Fusing-1996



Thomasine Giesecke

« *Epangelia* »

Siège de Bouygues Telecom
Boulogne Billancourt - 2001
MVR-BAT ALU/ Goude Glass



Thomasine Giesecke



Thomasine Giesecke



« *Persona* »

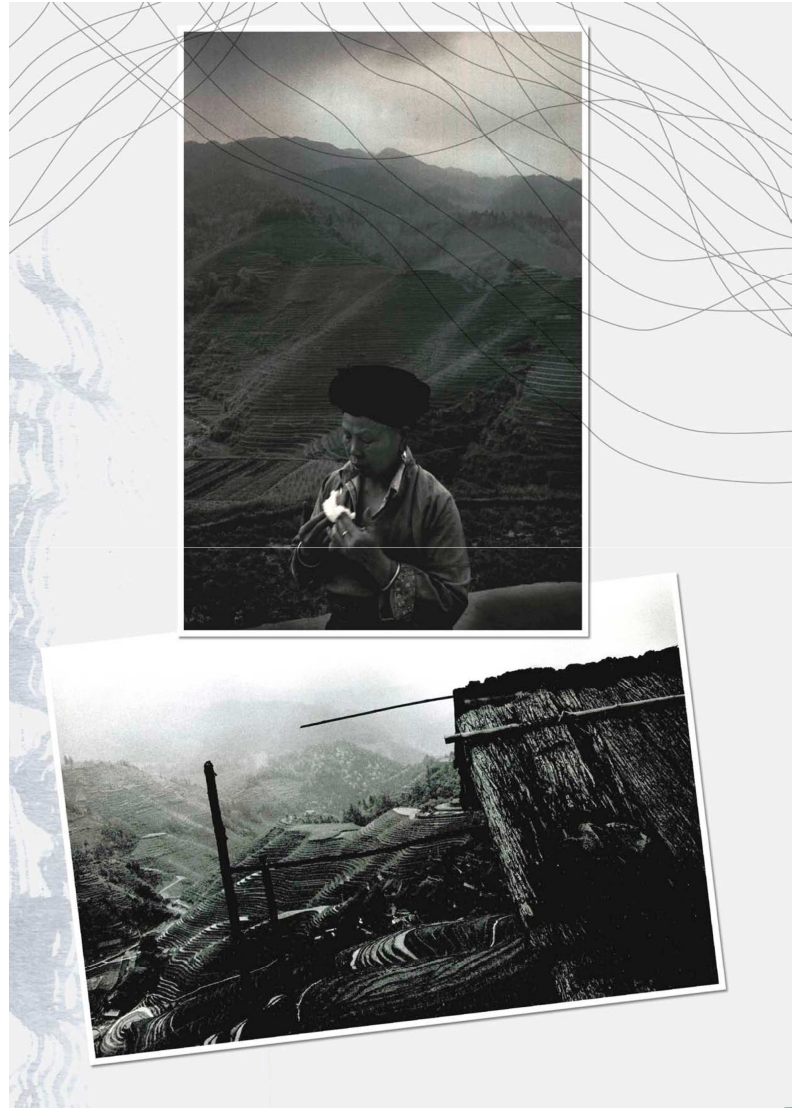
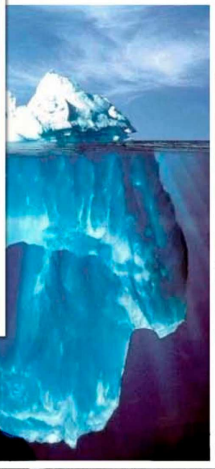
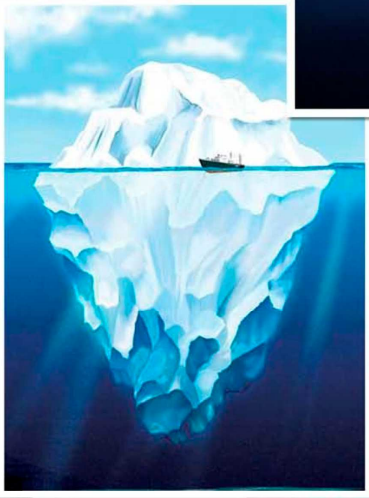
Nouveau siège d'ALSTOM

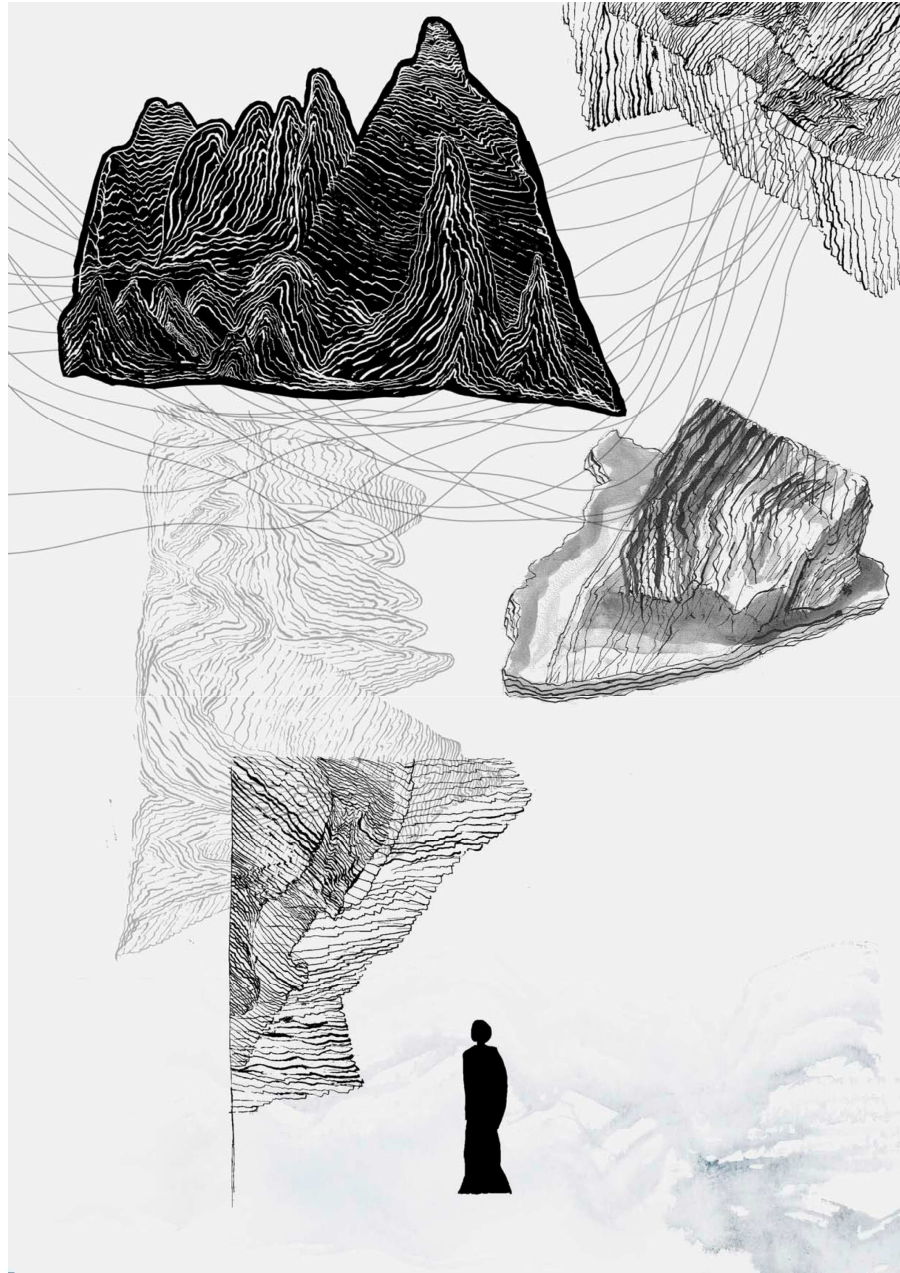
Saint-Ouen, 2009

GOUDE GLASS



Thomasine Giesecke



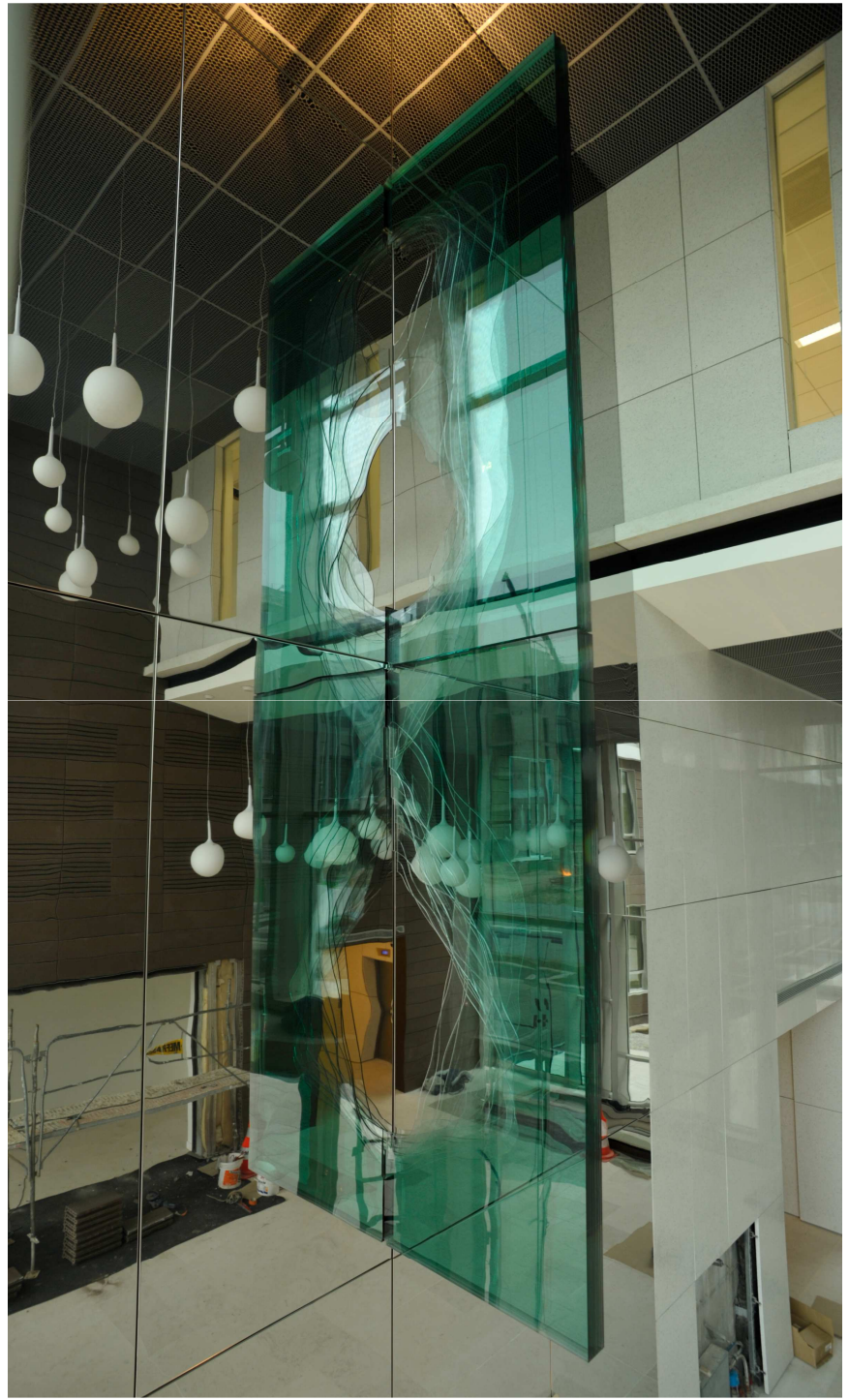


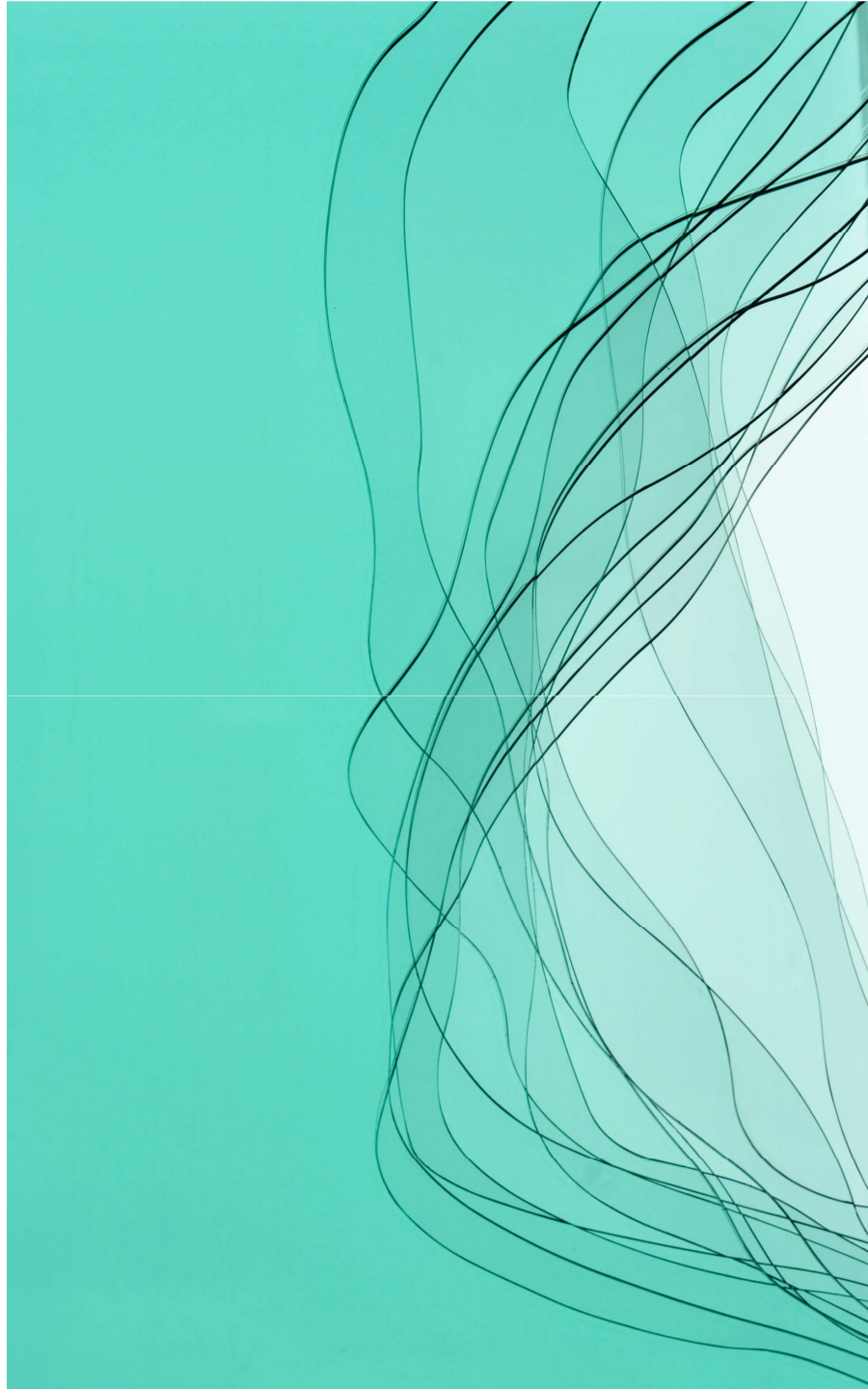
Thomasine Giesecke



Thomasine Giesecke







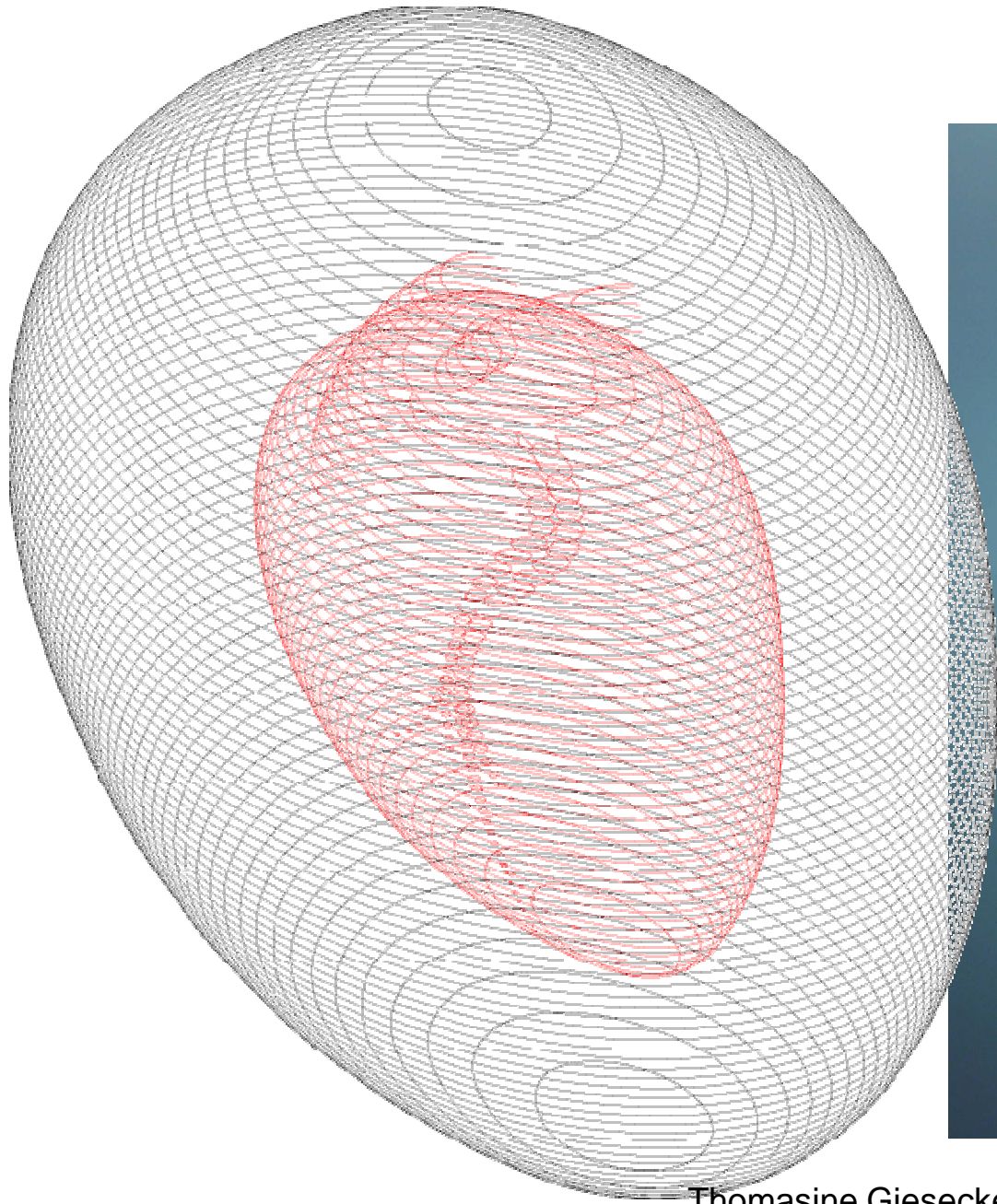


**« Heart bulletproof
handbag »**

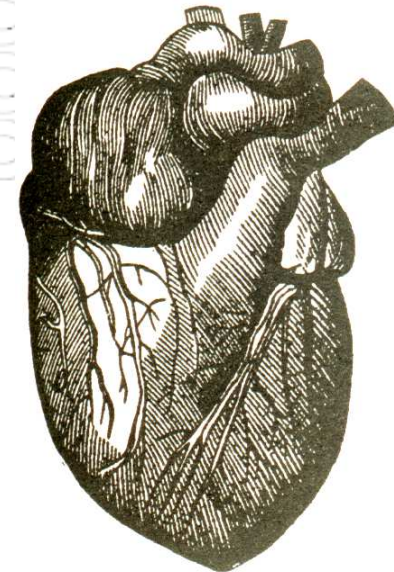
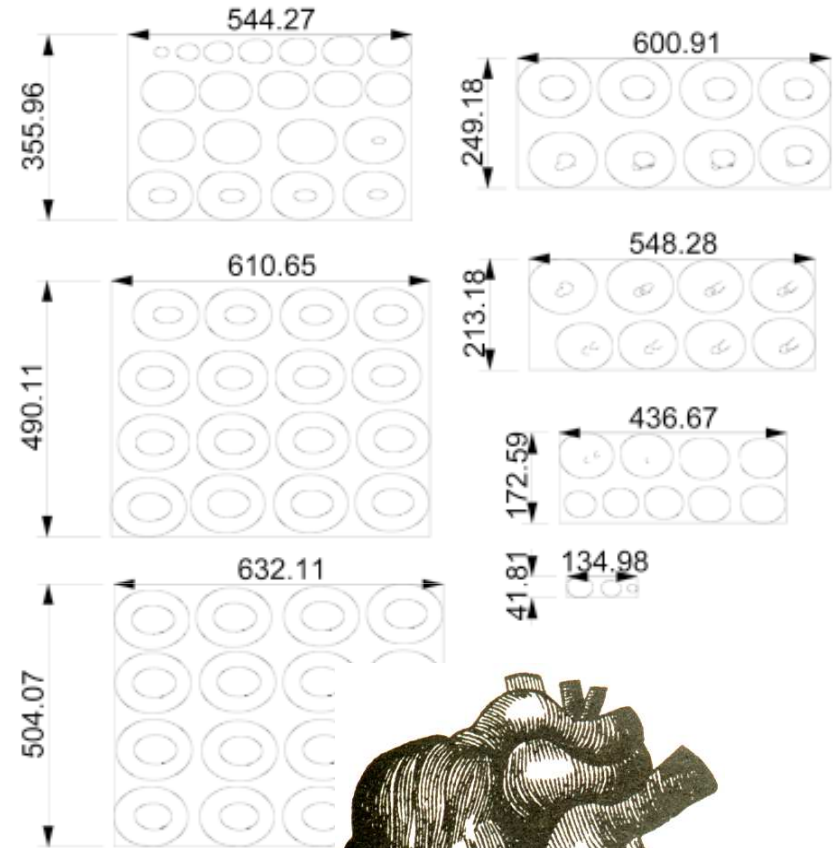
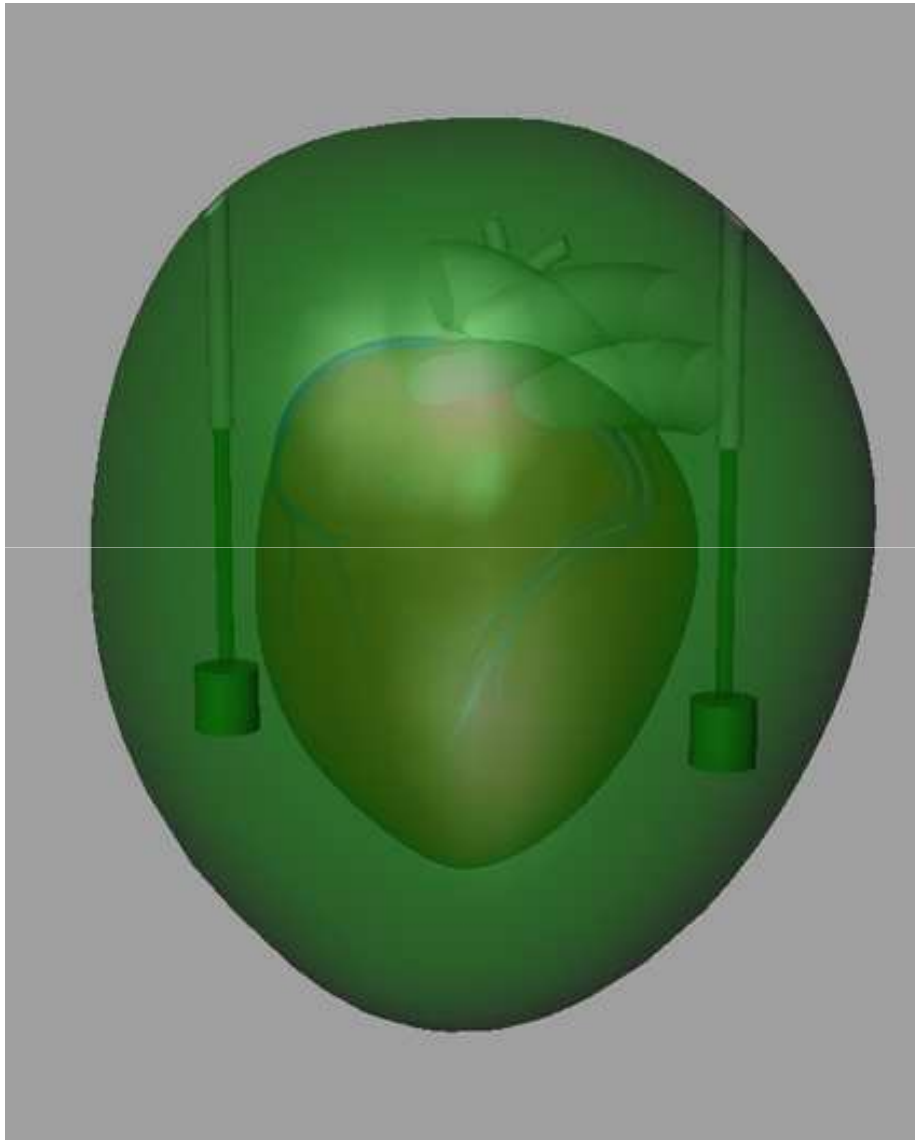
Xxème Festival International de
la Mode et de la Photographie,
Hyères 2005



Thomasine Giesecke



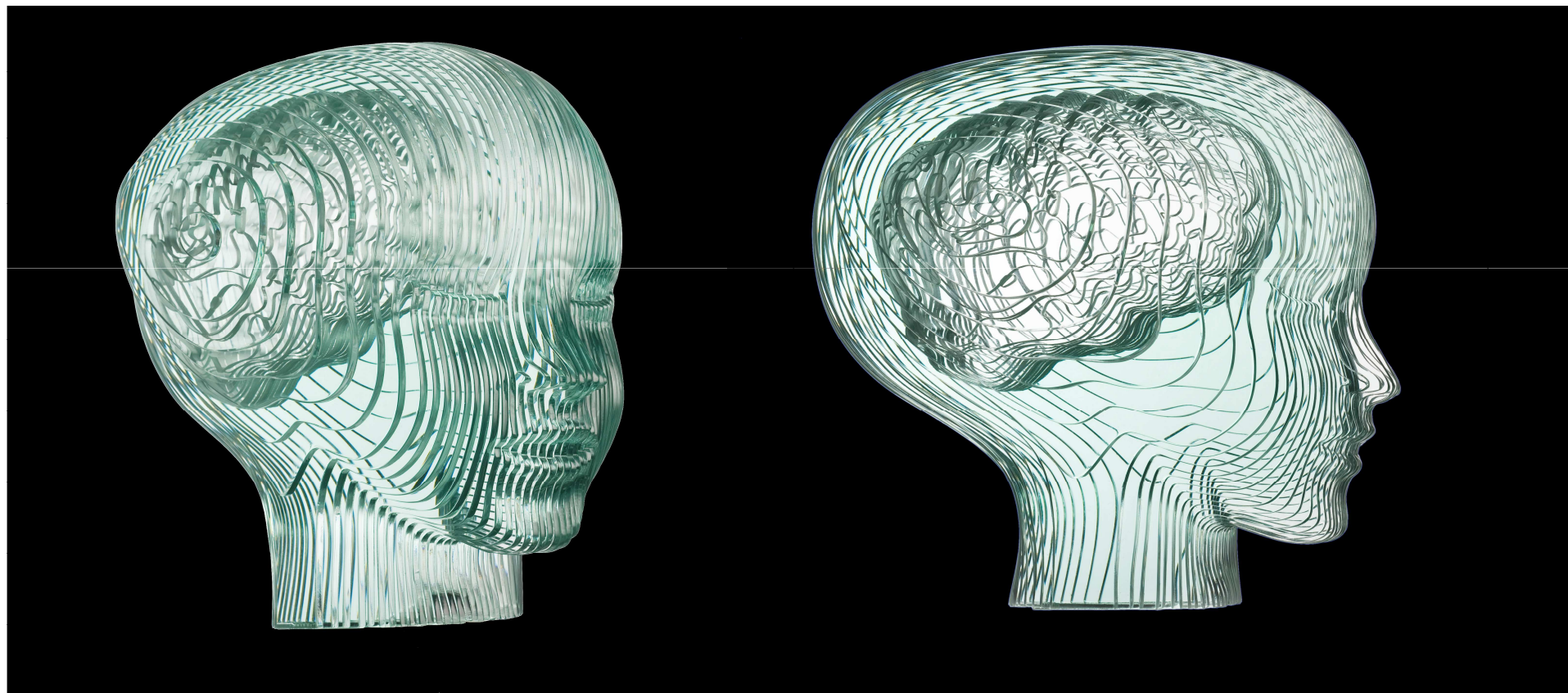
Thomasine Giesecke



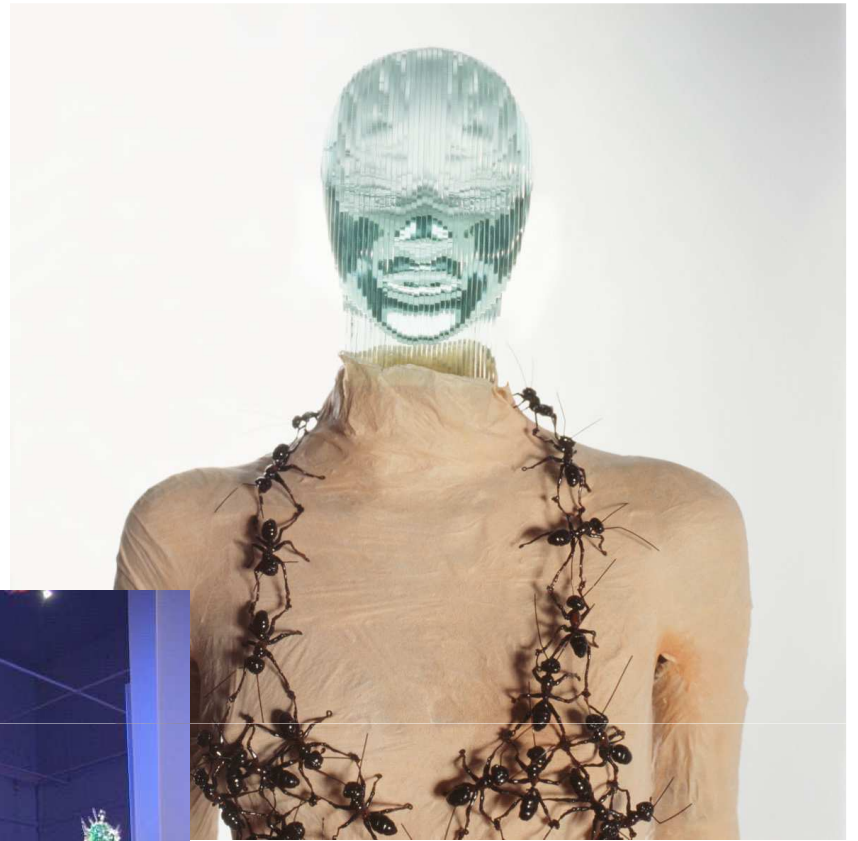
Thomasine Giesecke

Tête de l'avatar « *Trilogy* »

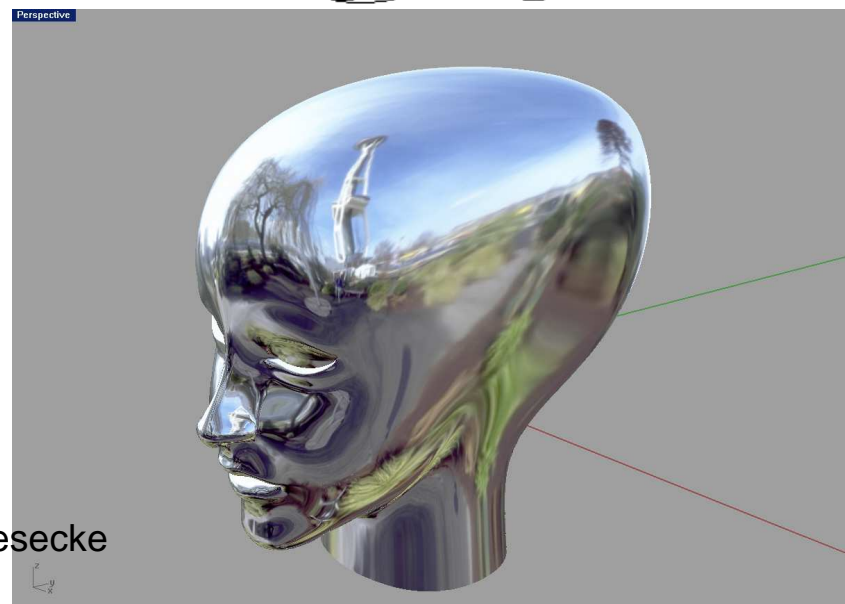
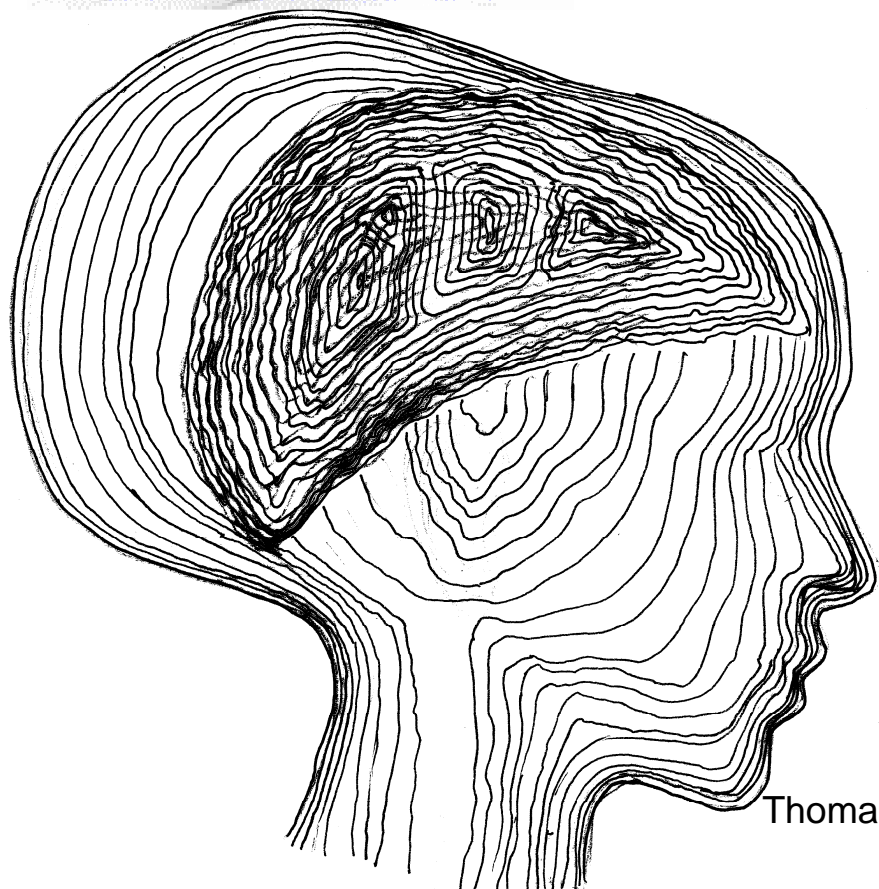
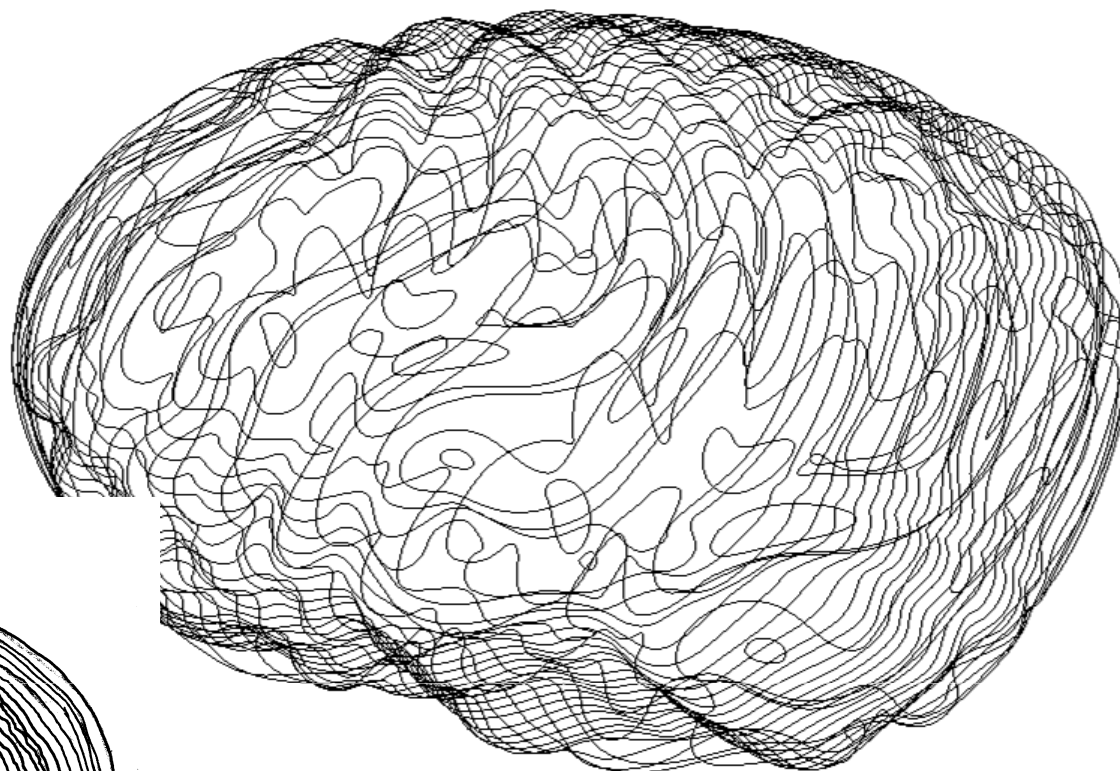
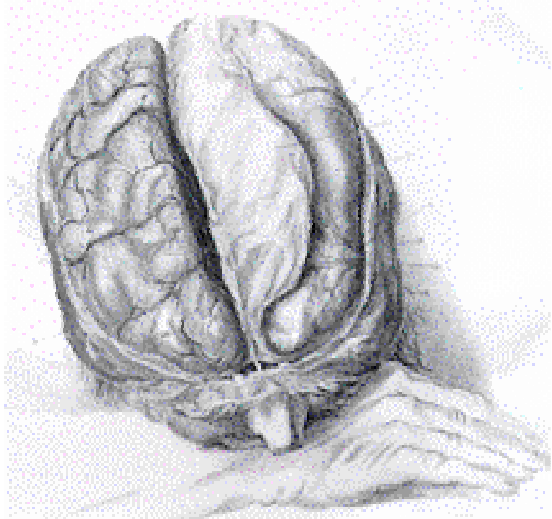
Musée de L'Homme / Exposition « Femmes Héroïques, une mythologie moderne » Paris 2007



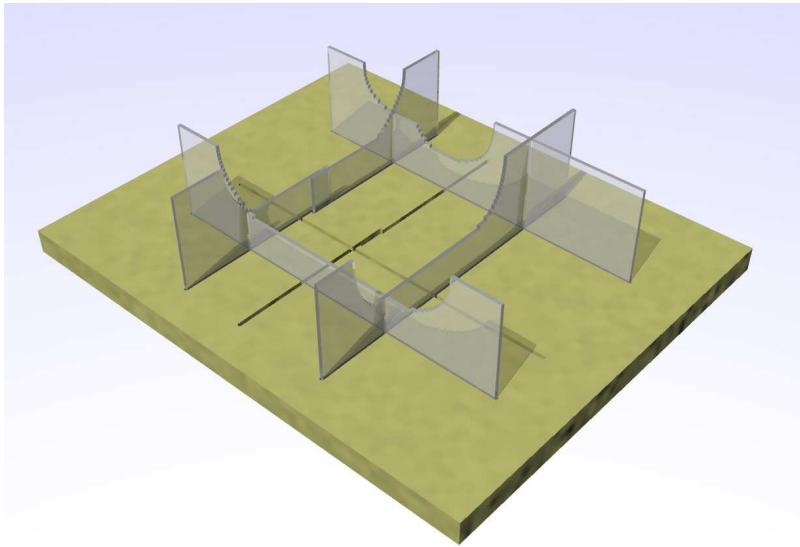
Thomasine Giesecke



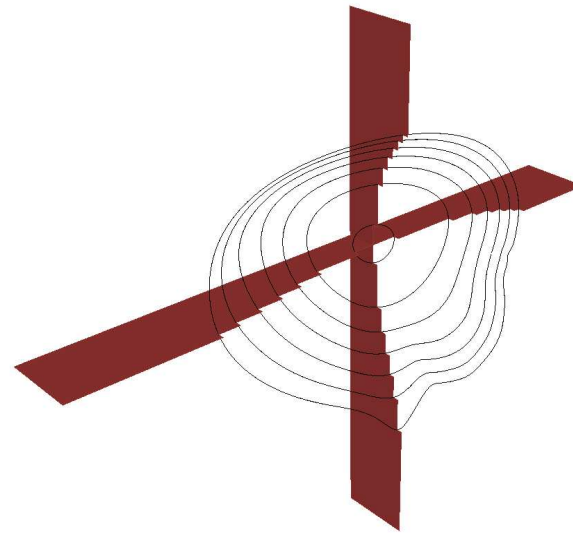
Thomasine Giesecke



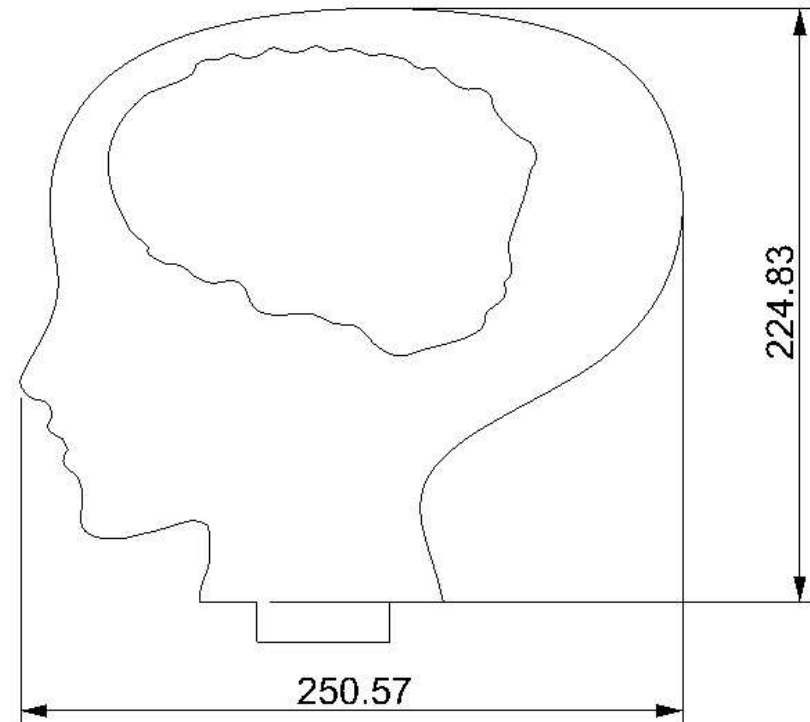
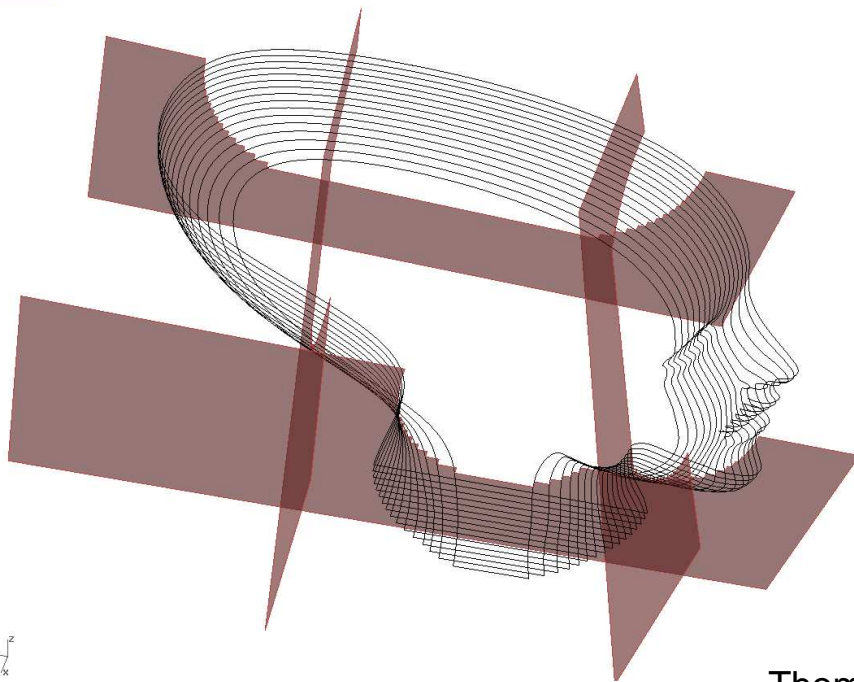
Thomasine Giesecke



Perspective



Perspective

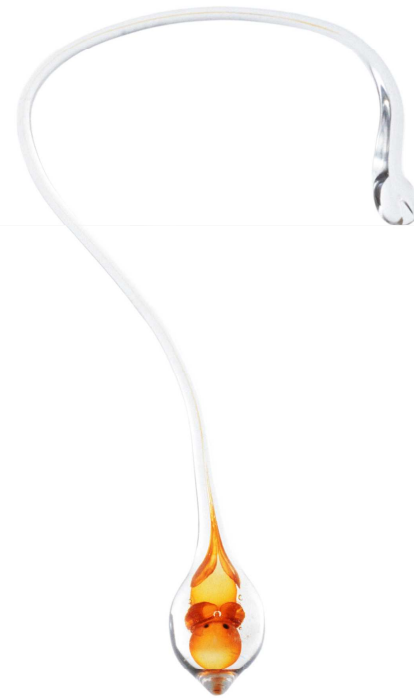


Thomasine Giesecke

7 weeks

pendentif

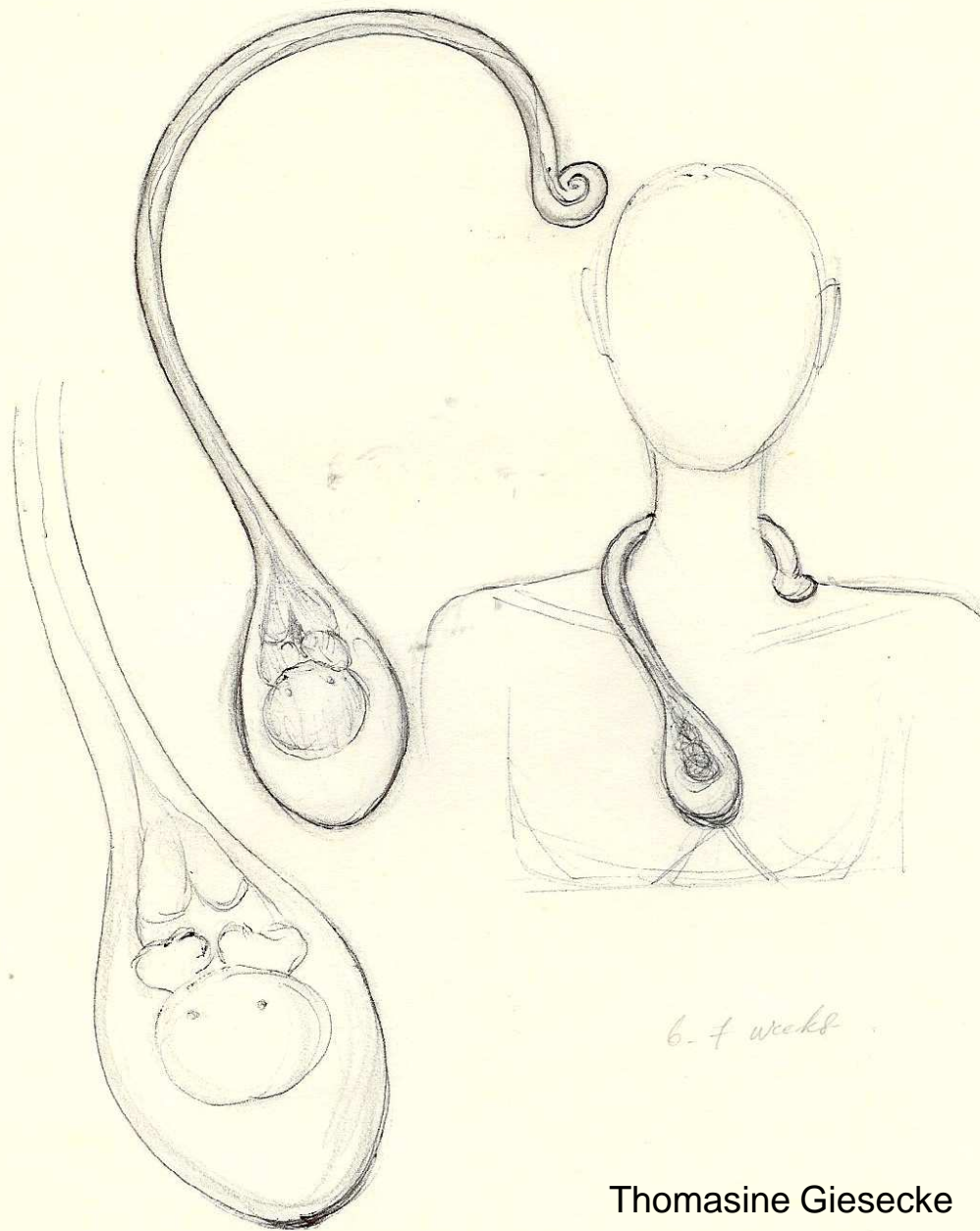
2006 & 2010



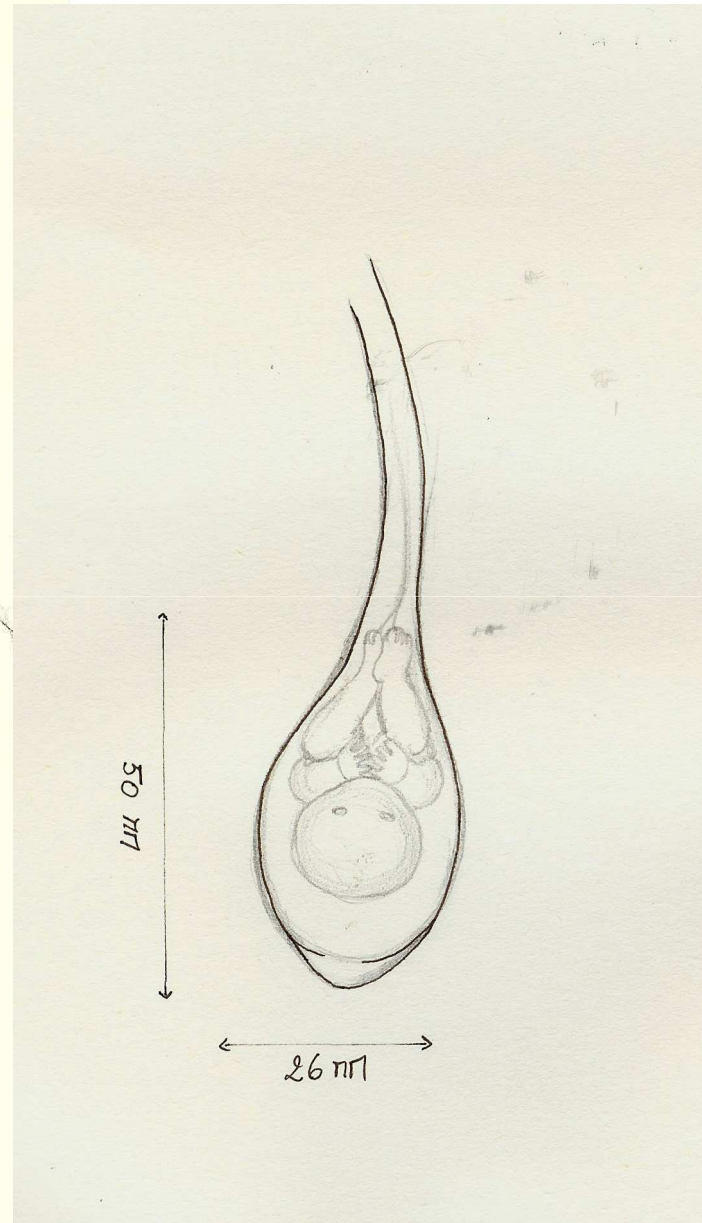
Thomasine Giesecke



Thomasine Giesecke



Thomasine Giesecke





Thomasine Giesecke

« *Poussières* »

Robe

2006 & 2009



Thomasine Giesecke



Thomasine Giesecke



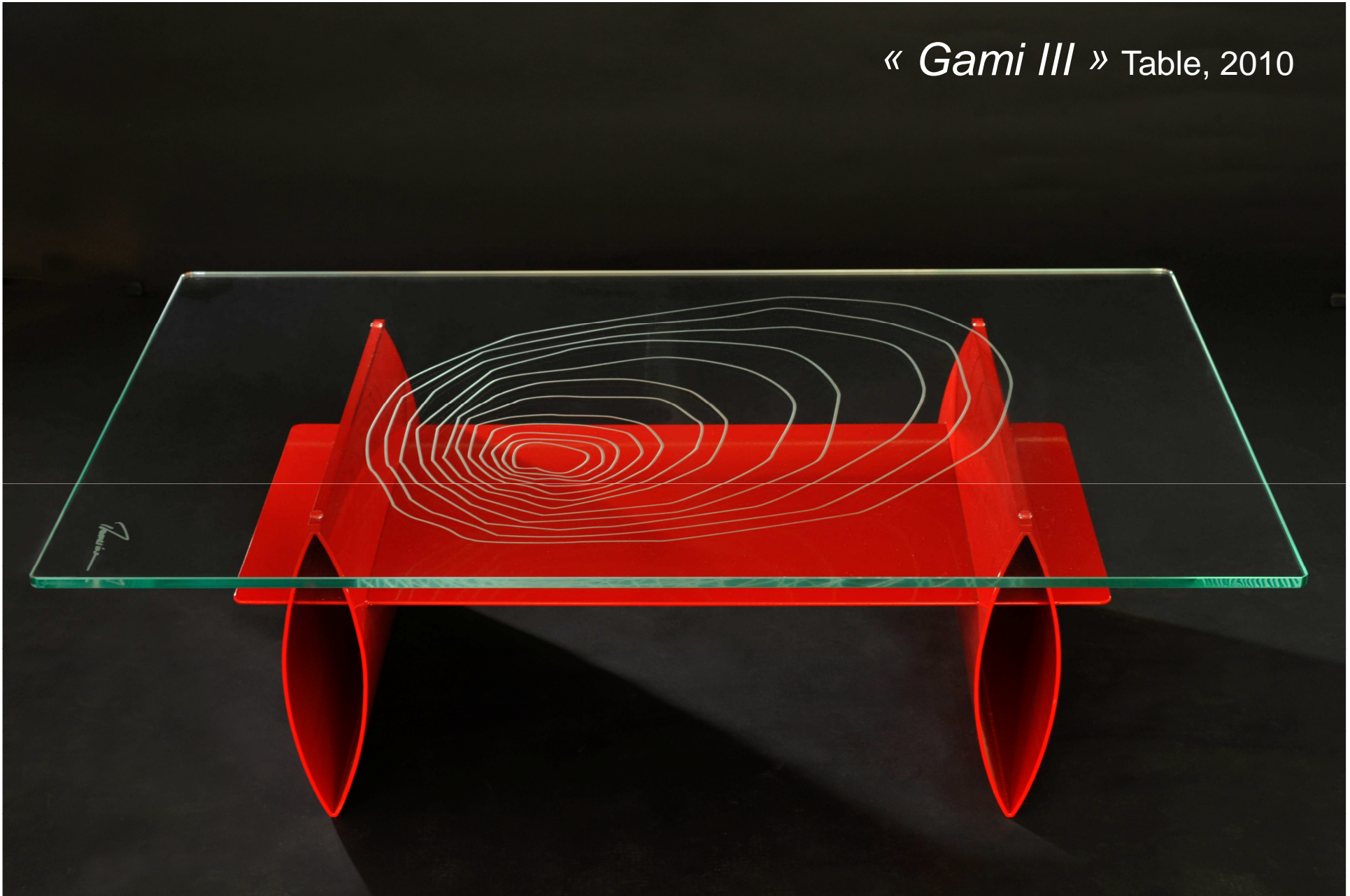
Gami II

Table, 2009

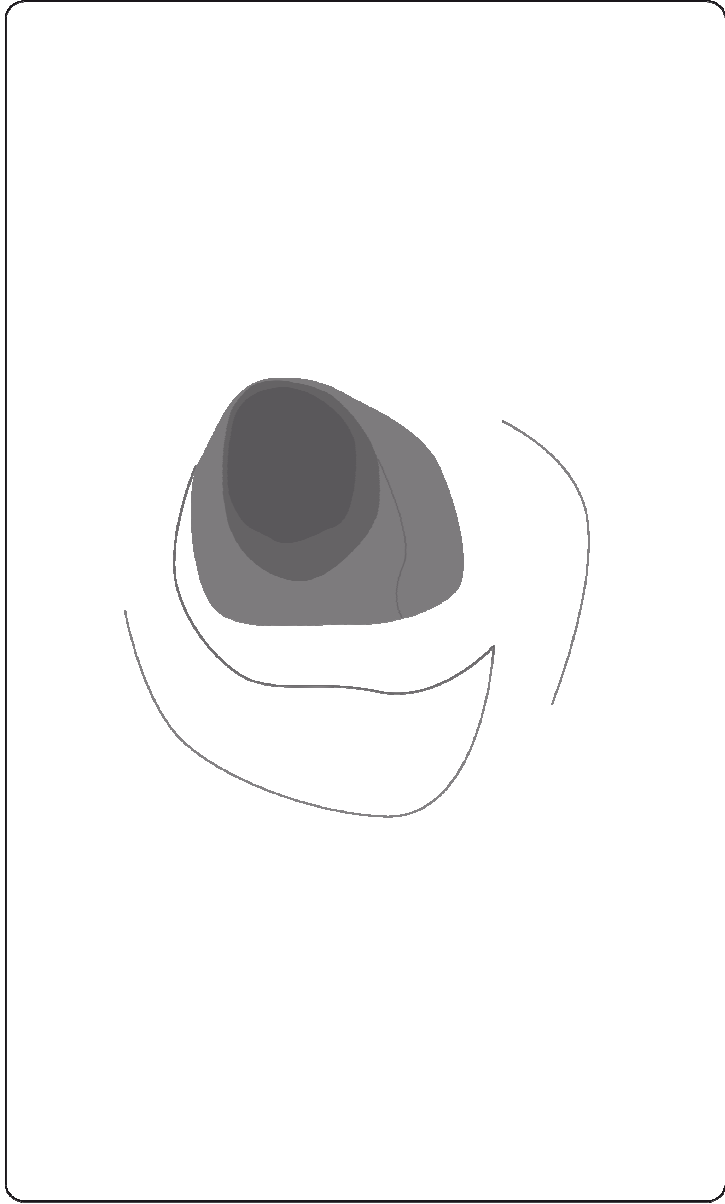


Thomasine Giesecke

« *Gami III* » Table, 2010

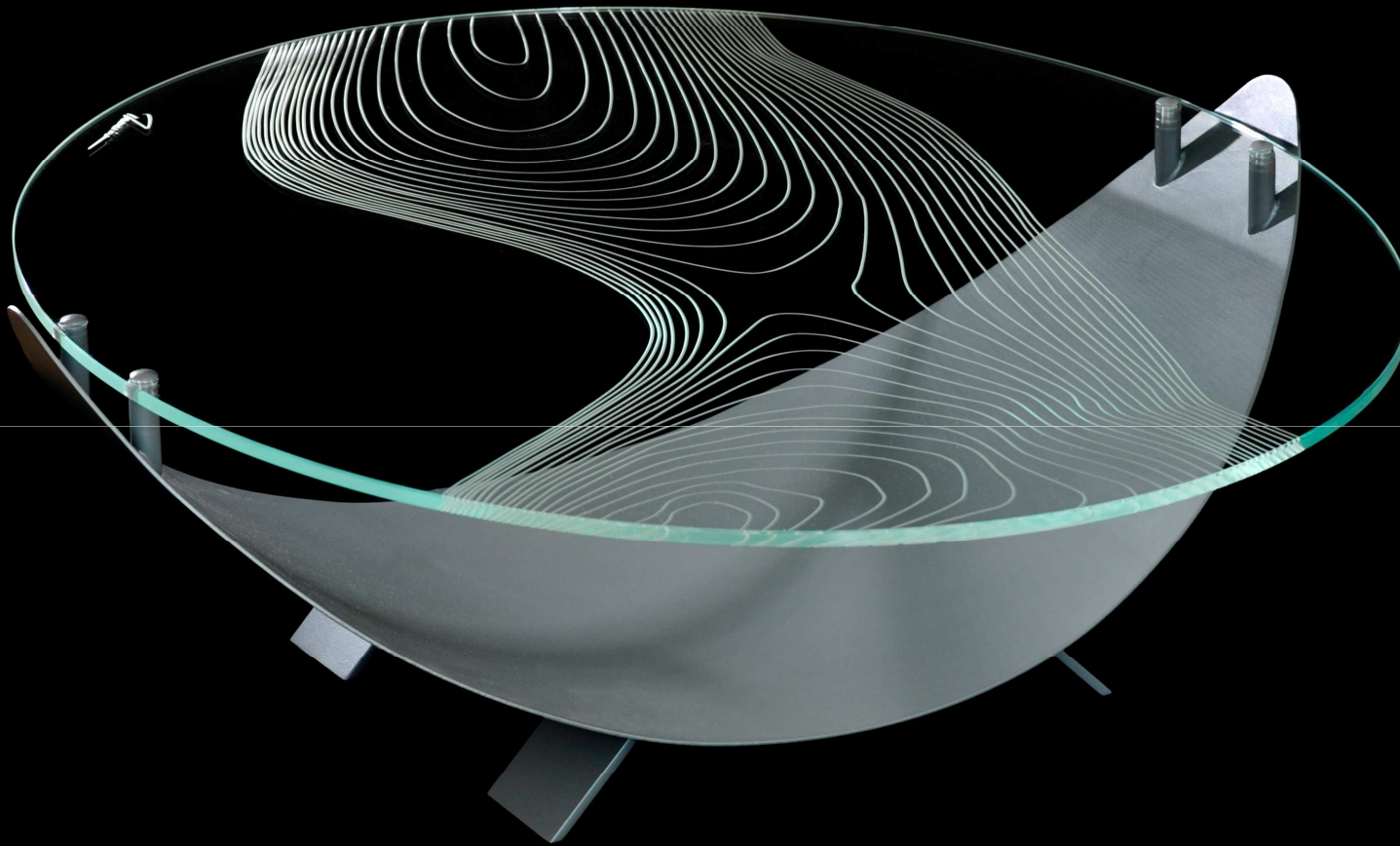


Thomasine Giesecke

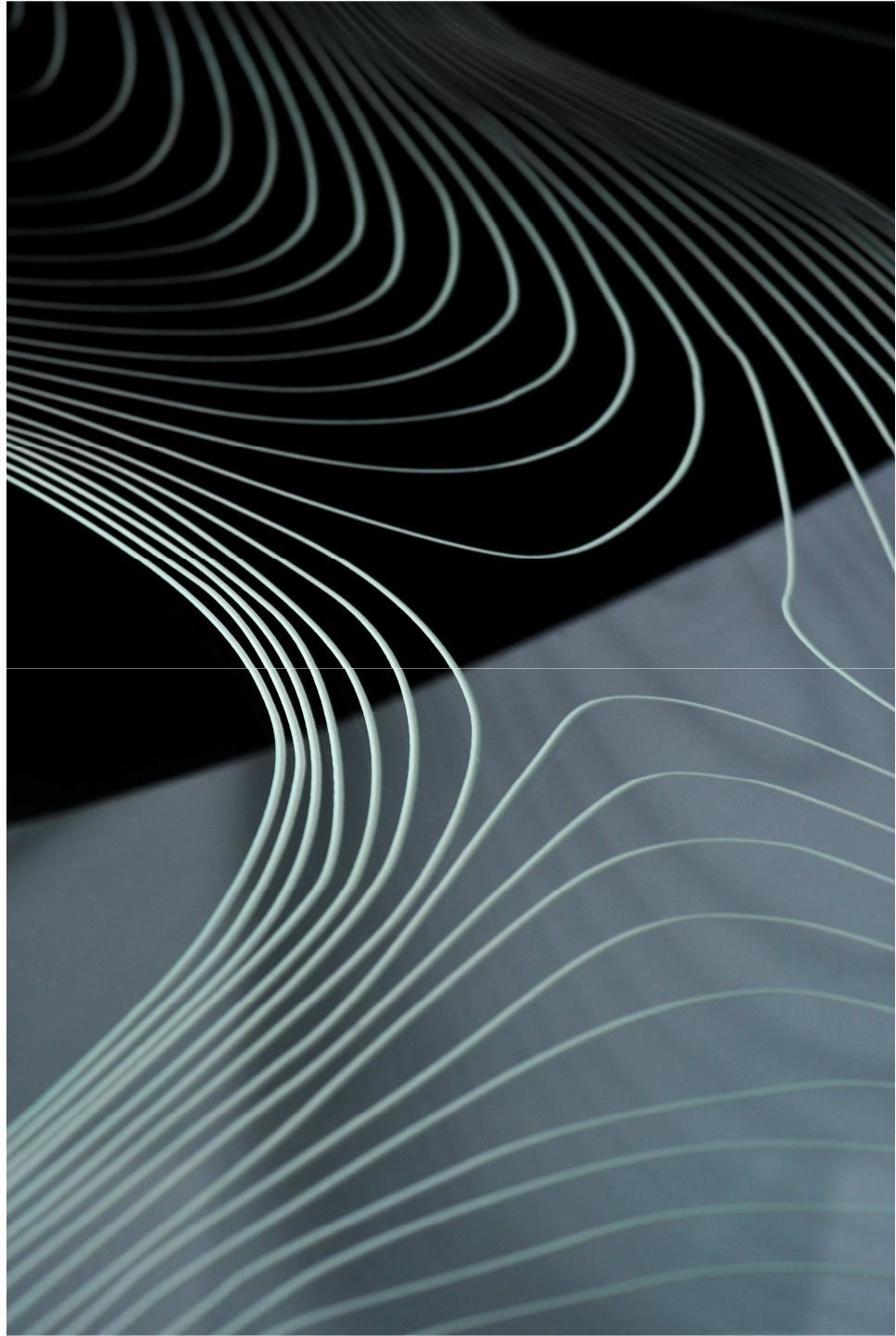


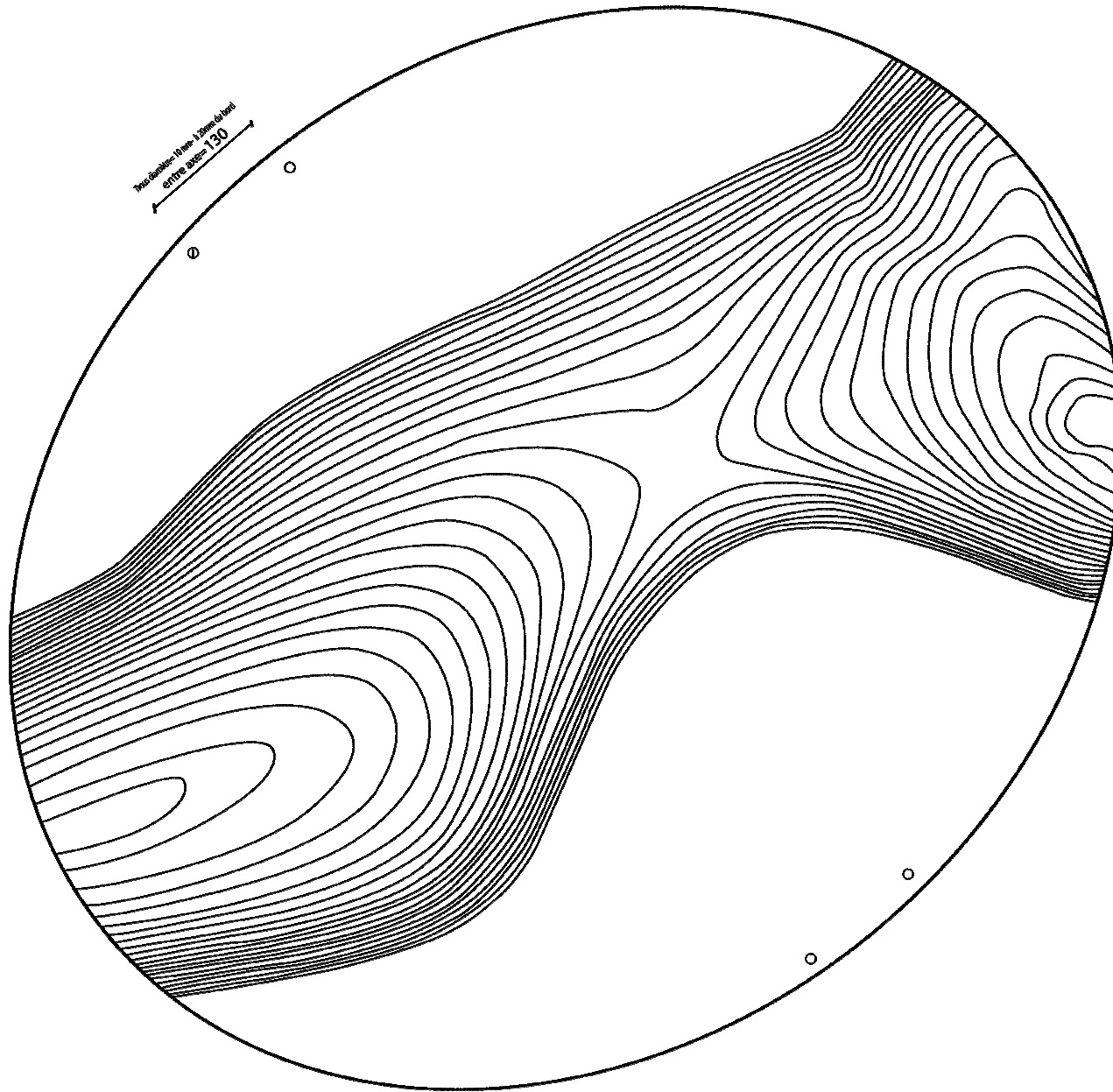
Thomasine Giesecke

« *Flower* » Table, 2011



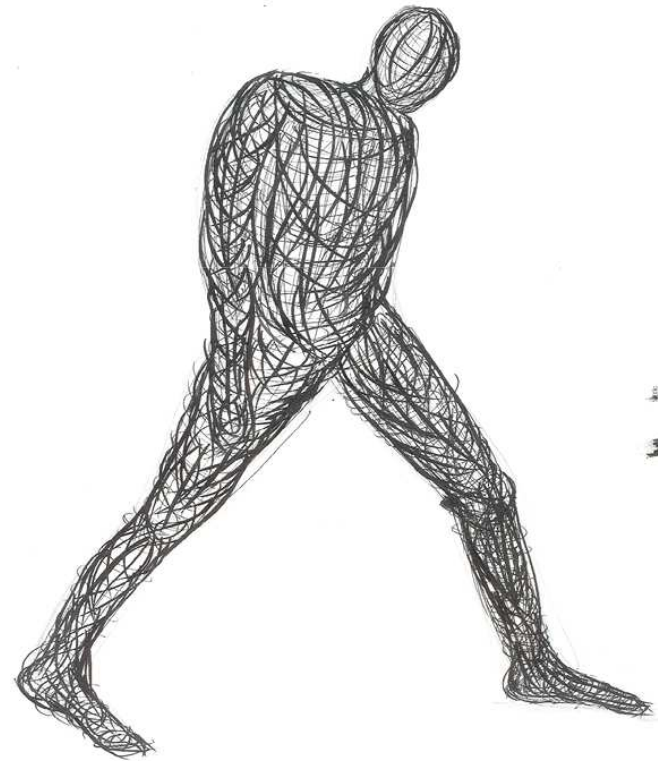
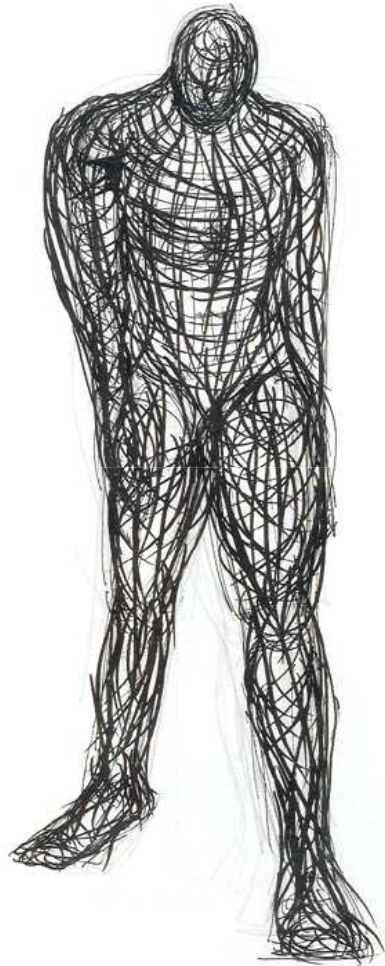
Thomasine Giesecke



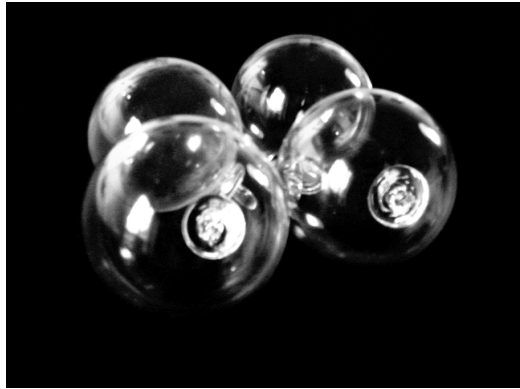


Thomasine Giesecke

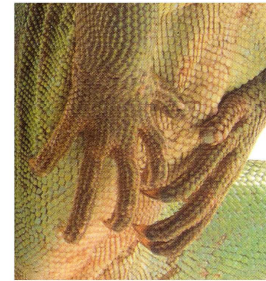
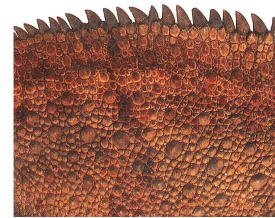
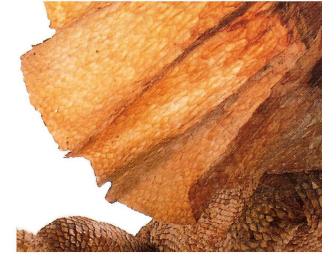
Le colporteur de verre



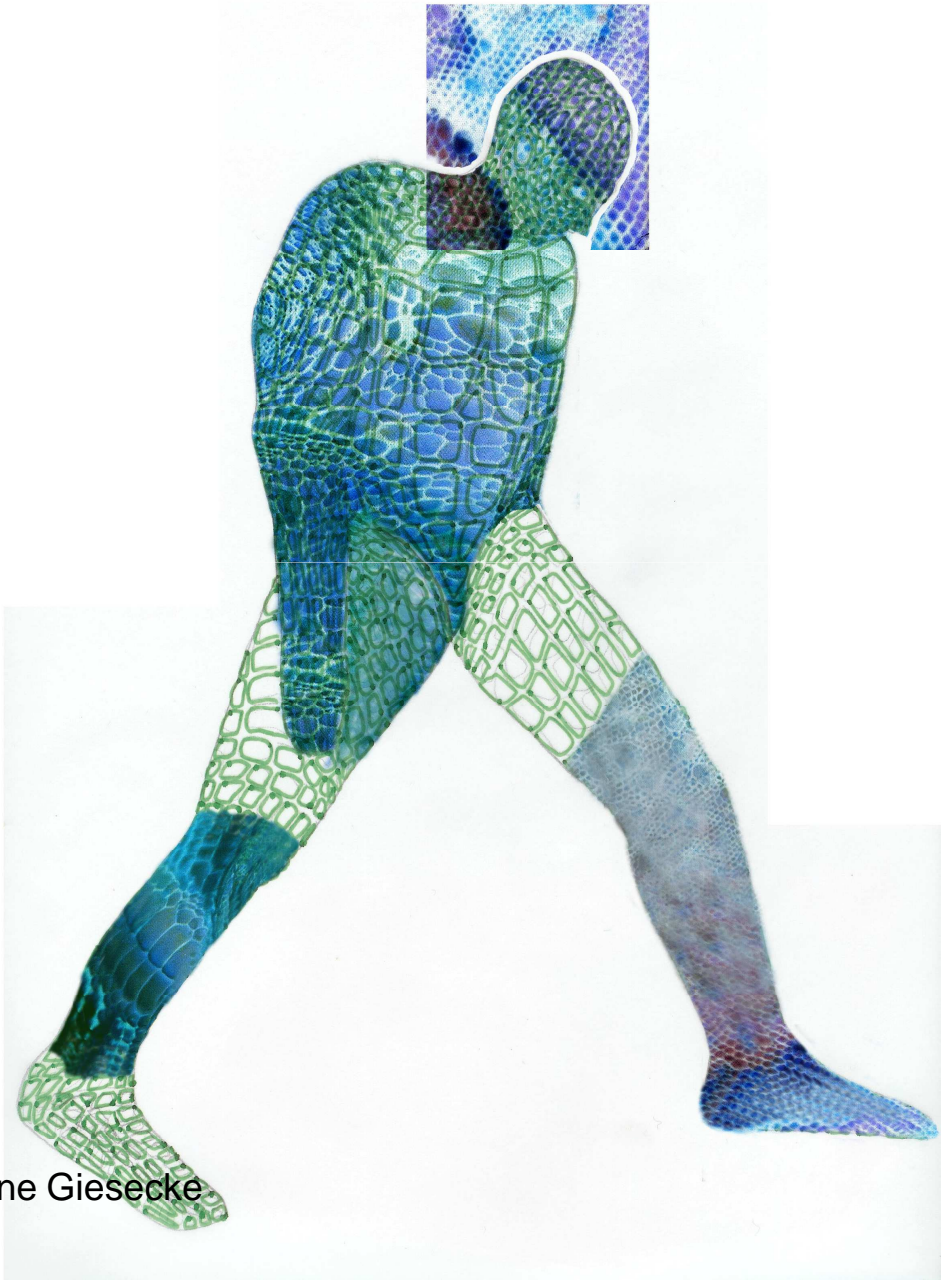
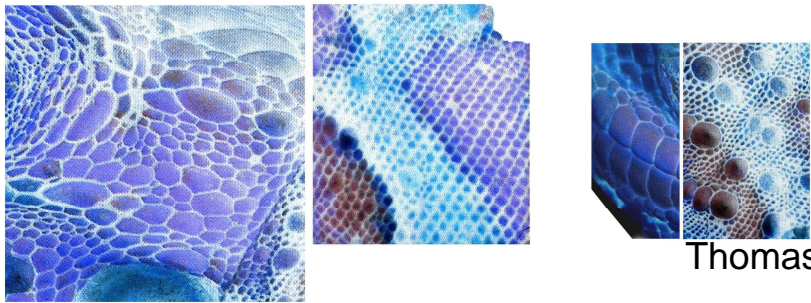
Thomasine Giesecke



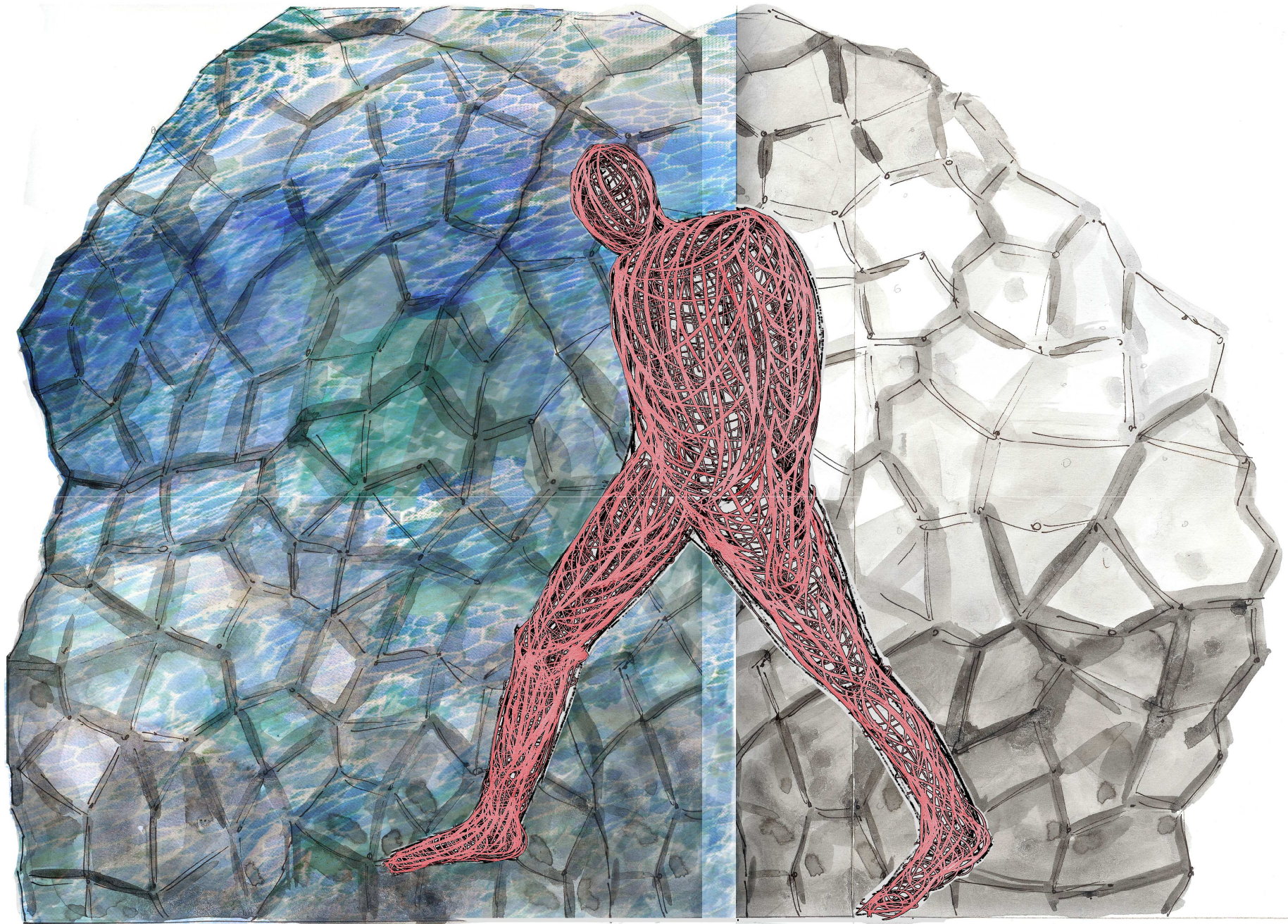
Thomasine Giesecke



Thomasine Giesecke



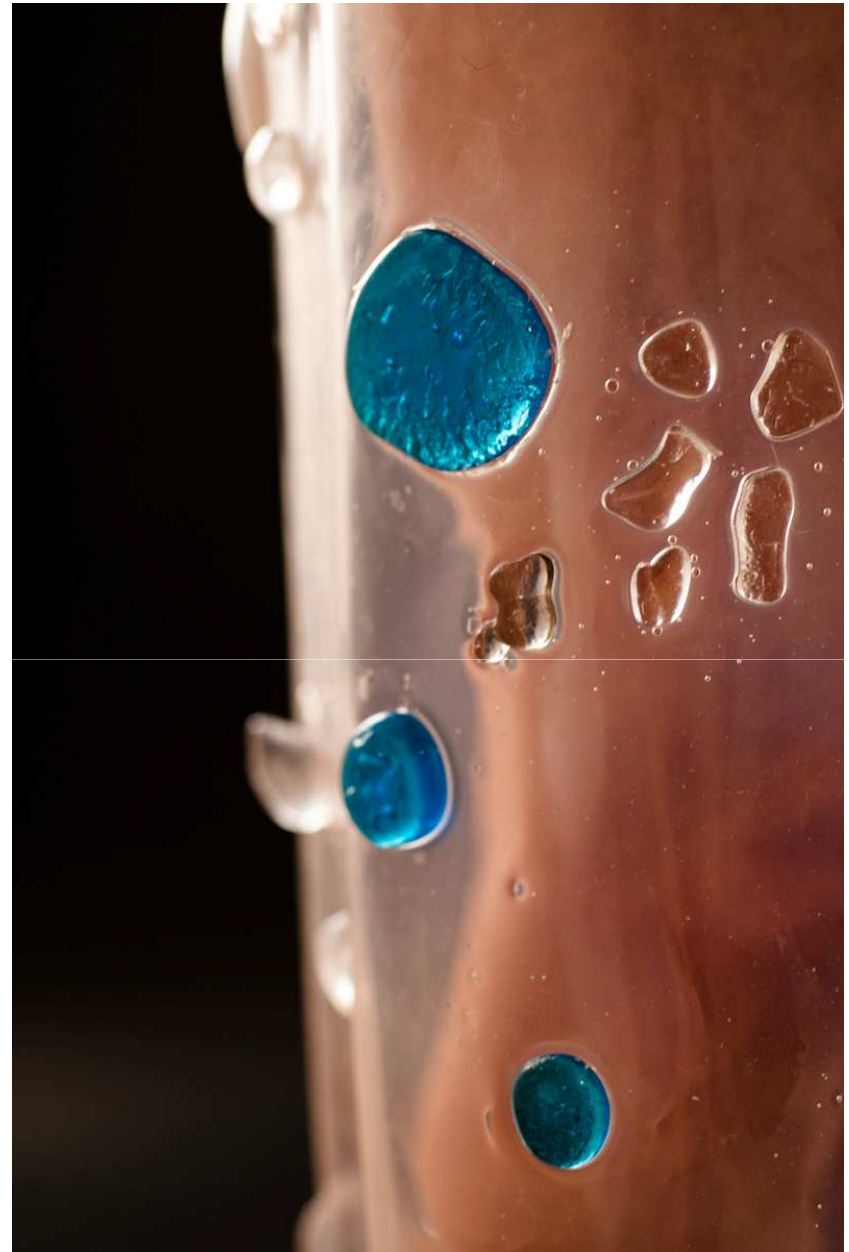
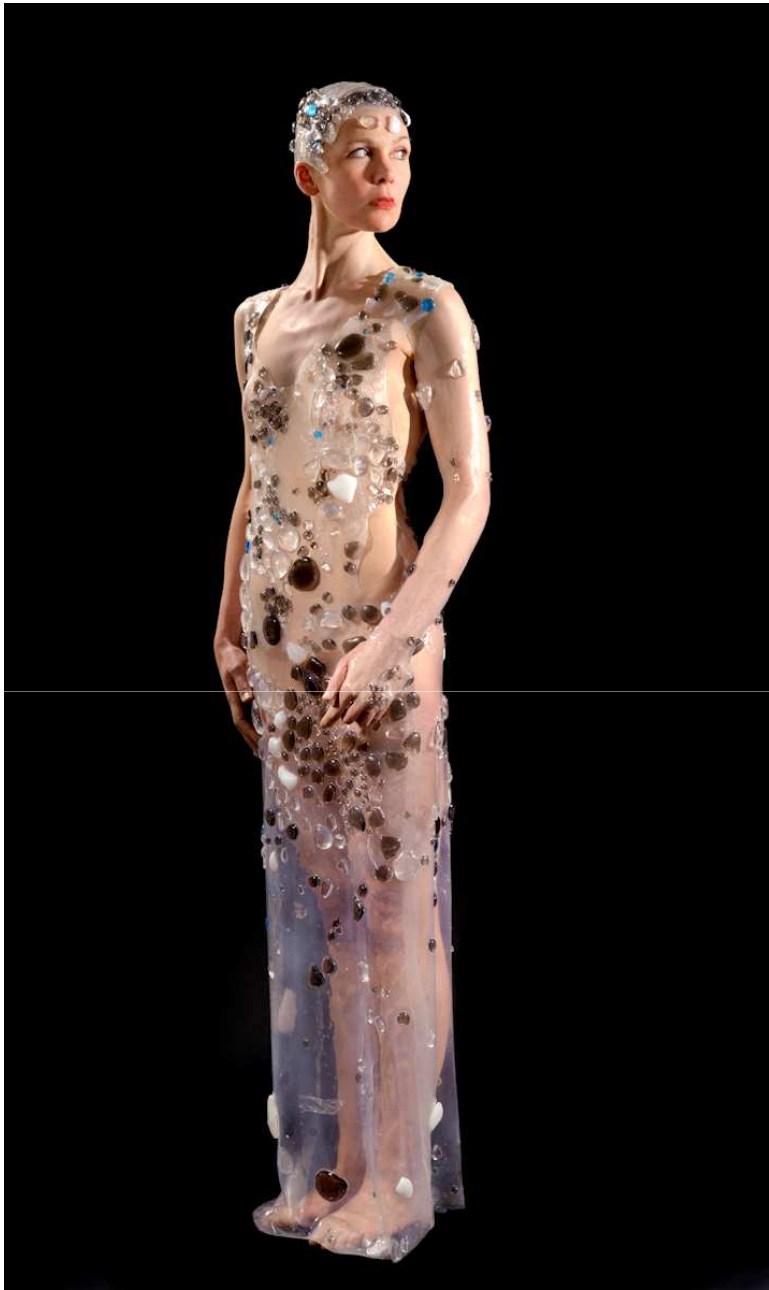
Thomasine Giesecke



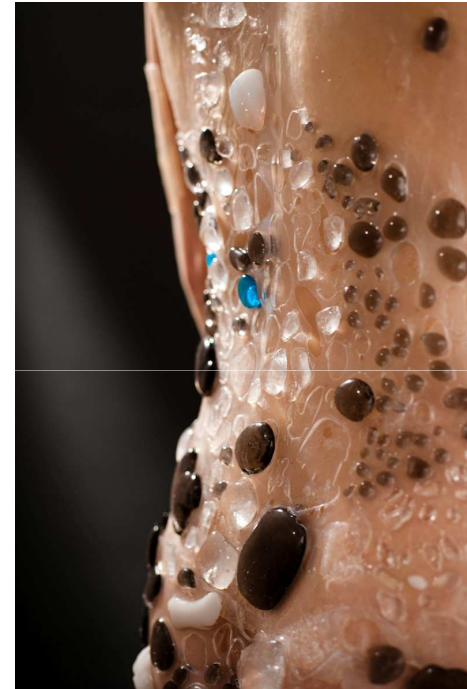
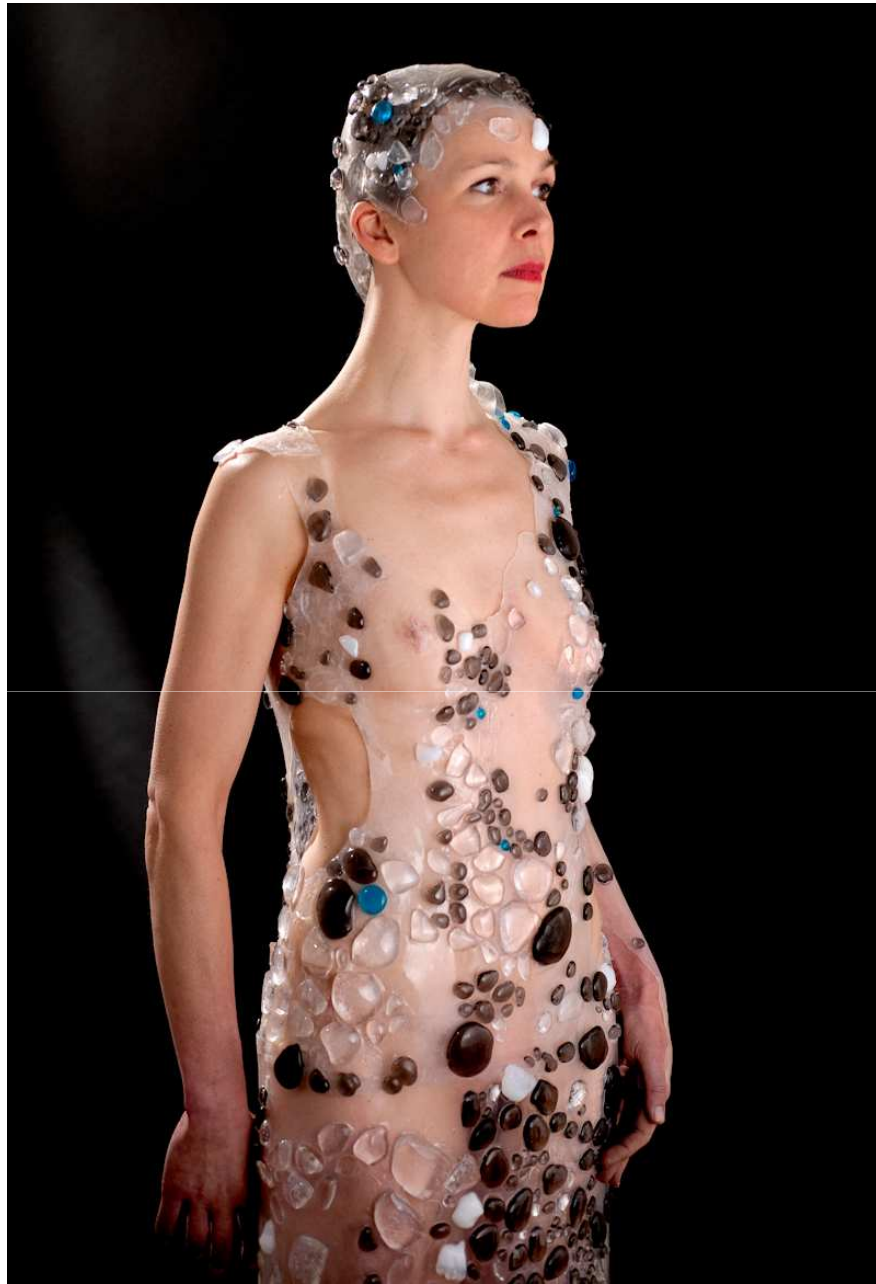
Thomasine Giesecke

« *Glasskin* » 2011





Thomasine Giesecke



Thomasine Giesecke

Le Verre en Sculpture: Du Minimal au Monumental



Thomasine Giesecke

+33 (0)6 50 14 69 38

Mailto: thom@thomasinegiesecke.com

Website: www.thomasinegiesecke.com